

LEVEL 3 CHILDREN'S CARE, PLAY, LEARNING AND DEVELOPMENT: PRACTICE AND THEORY

Why choose Level 3 Children's Care, Play, Learning and Development: Practice and Theory?

This qualification is primarily for those working, or seeking to work in regulated childcare settings with families/carers and children under the age of 8 years and NHS children's services for those working with families/carers and children aged 0-19 years. It is primarily aimed at learners studying in a further education.

The qualification provides practice and theory upskilling to level 3 standard for learners who wish to enter the early years workplace. The course balances a mixture of theory and practical to develop the learner in all areas of early years practice.

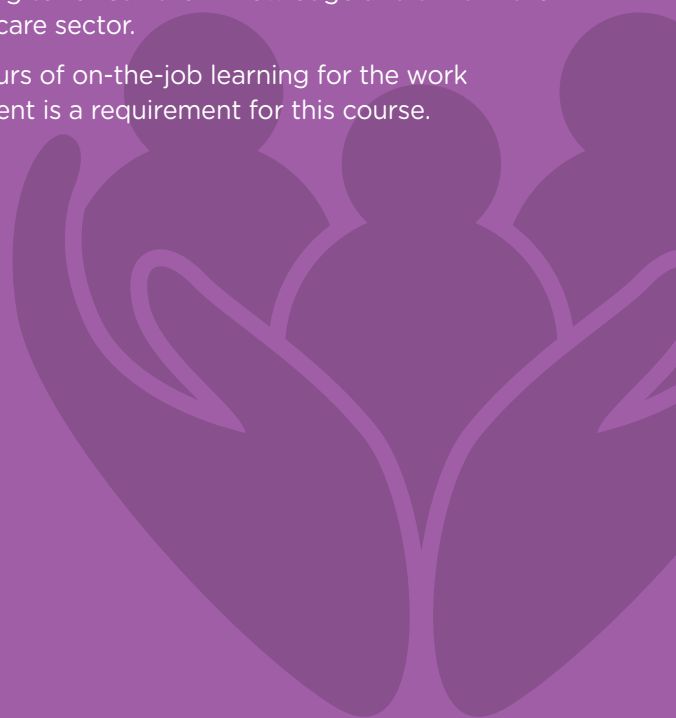
What will I study?

The Level 3 Children's Care, Play, Learning and Development: Practice and Theory qualification combines theoretical knowledge in children's care, play, learning and development with the practical skills needed to work within the sector.

It is primarily designed for post-16 learners in further education who are:

- interested in working in a support role in the childcare sector
- studying, or have completed Level 2 Children's Care, Play, Learning and Development: Core qualification
- returning to the workforce after a career break looking to refresh their knowledge and skills in the Childcare sector.

700 hours of on-the-job learning for the work placement is a requirement for this course.



LEVEL 3 CHILDREN'S CARE, PLAY, LEARNING AND DEVELOPMENT: PRACTICE AND THEORY



What skills will I develop?

This qualification allows learners to develop the knowledge and skills required for employment and/or career progression in childcare or health settings.

It combines both practice units that are assessed within the workplace with additional theoretical knowledge. The practice element of this qualification mirrors that of the Level 3 Children's Care, Play, Learning and Development: Practice qualification.

By completing this qualification, learners will be able to demonstrate that they:

- understand, and apply in practice, the principles and values which underpin children's care, play, learning and development
- understand, and apply, in practice, child-centred approaches to care, play and learning
- can promote and support child development through their own practice
- can evaluate research and theories to support practice
- are aware of key policies within the sector and how these affect service development and delivery
- can work in partnership with children, their families, carers and a range of professionals
- can reflect on practice to continuously improve
- can apply a range of problem-solving techniques
- can use literacy, numeracy and digital competency skills as appropriate within their role.

How will I be assessed?

The Level 3 Children's Care, Play, Learning and Development: Practice and Theory qualification is assessed through 70% internal assessment and 30% external assessment. Candidates must successfully complete:

- an externally set, internally marked set of tasks
- a portfolio of evidence
- a discussion with their assessor
- an external examination
- an externally set and marked extended investigation.

Careers with Level 3 Children's Care, Play, Learning and Development: Practice and Theory

Completion of the Level 3 Children's Care, Play, Learning and Development: Practice and Theory qualification provides a suitable foundation for the study of early years and childcare through a range of higher education courses, or apprenticeships.

It also carries UCAS Points.

Or

This qualification will also allow learners to progress into employment within a Level 3 role or progress to further learning via the following Consortium qualifications:

- GCE Health and Social Care, and Childcare
- Level 4 Children's Care, Play, Learning and Development with specialism
- Level 4 Leadership and Management, Children's Care, Play, Learning and Development: Principles, Theories and contexts.